

MONTHLY MEMBERSHIP PROGRESS REPORT

District N 2

Results as of: 6/30/2025

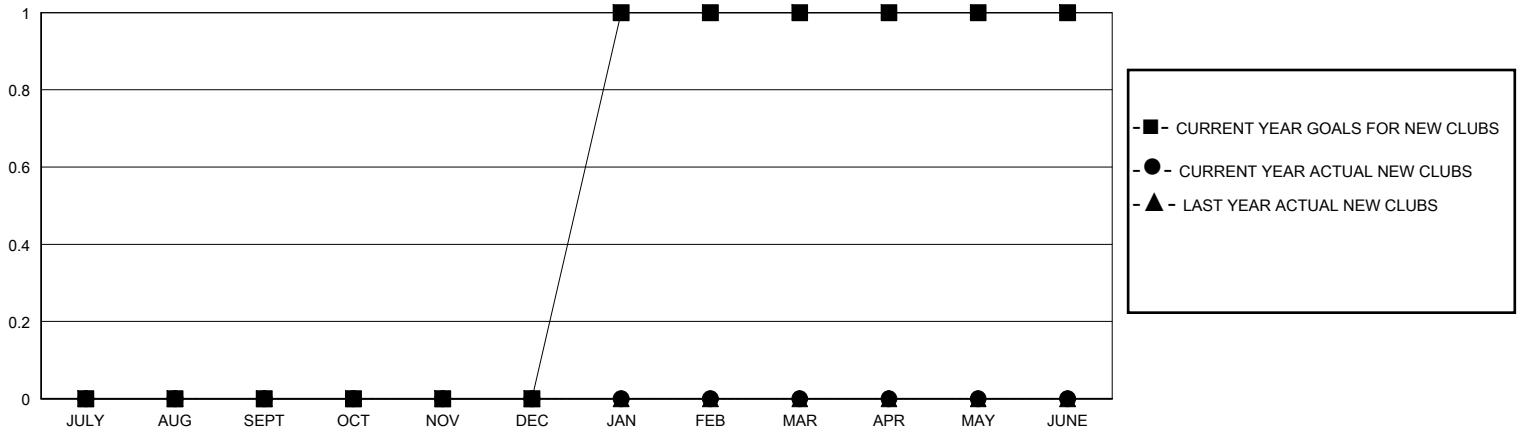
GMT:

LOCATION NOVA SCOTIA

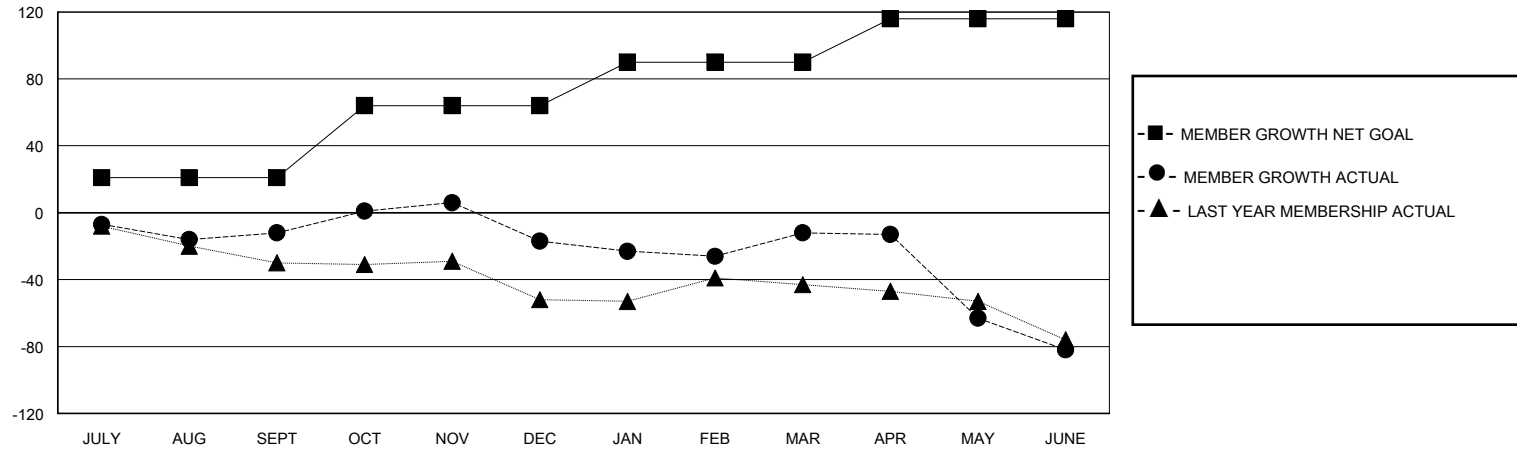
GMT CA

Clubs				Members			
RESULTS FOR 2024-2025				RESULTS FOR 2024-2025			
QUARTER	NEW CLUB GOAL	NEW CLUBS	DROPPED CLUBS	QUARTER	MEMBER GROWTH NET GOAL	MEMBER GROWTH ACTUAL	DROPPED MEMBERS ACTUAL (including transfers)
JULY/AUG/SEPT	0	0	0	JULY/AUG/SEPT	21	31	35
OCT/NOV/DEC	0	0	1	OCT/NOV/DEC	43	75	72
JAN/FEB/MAR	1	0	1	JAN/FEB/MAR	26	55	39
APR/MAY/JUNE	0	0	1	APR/MAY/JUNE	26	34	100

GOALS AND ACTUAL NEW CLUBS CUMULATIVE



GOALS AND ACTUAL MEMBERS CUMULATIVE



DROPPED CLUBS: 3		45 CLUBS OF 68 ADDED 1 OR MORE NEW MEMBERS	<u>GENDER DISTRIBUTION</u>	
			MALE	871 (57.08%)
			FEMALE	654 (42.86%)
<u>DROPPED MEMBERS</u>		CLICK HERE FOR CUMULATIVE MEMBERSHIP DATA		
DECEASED	30		TOTAL FAMILY UNIT MEMBERS 289	
CLUB CANCELLED	38			
OTHER	176		FAMILY MEMBERS PAYING HALF DUES 148	
TOTAL	244			